

1. THIS DRAWING IS THE PROPERTY OF MBAJ ARCHITECTURE AND IS NOT TO BE REPRODUCED OR COPIED IN WHOLE OR IN PART. IT IS NOT TO BE USED ON ANY OTHER PROJECT AND IS TO BE RETURNED ON REQUEST.

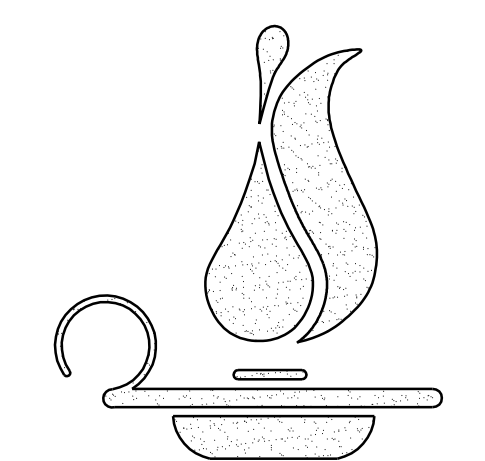
2. MATERIALS, DIMENSIONS AND ALL OTHER CONDITIONS WHICH ARE NOT OTHERWISE DEFINED ON THIS DRAWING SHALL BE CONSIDERED AS HAVING THE SAME MEANING AS SIMILARLY INDICATED CONDITIONS WHERE ON THE MORE FULLY DEFINED DRAWINGS ON THIS PROJECT OR OTHER DRAWINGS ON THIS PROJECT.

REVISIONS		
NO.	DATE	DESCRIPTION

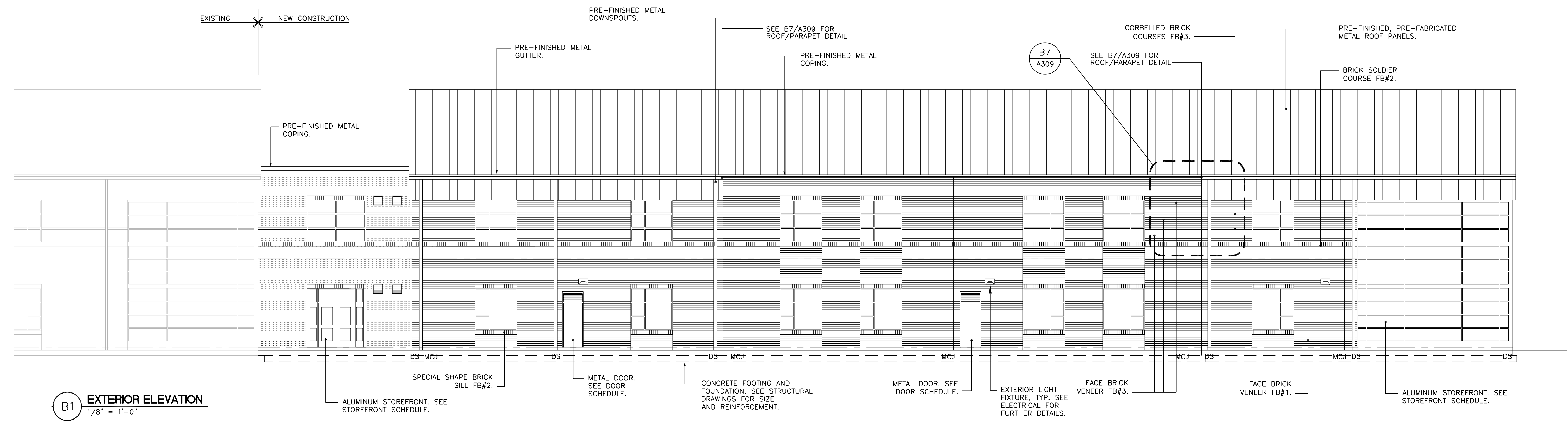
LAKE NORMAN HIGH SCHOOL



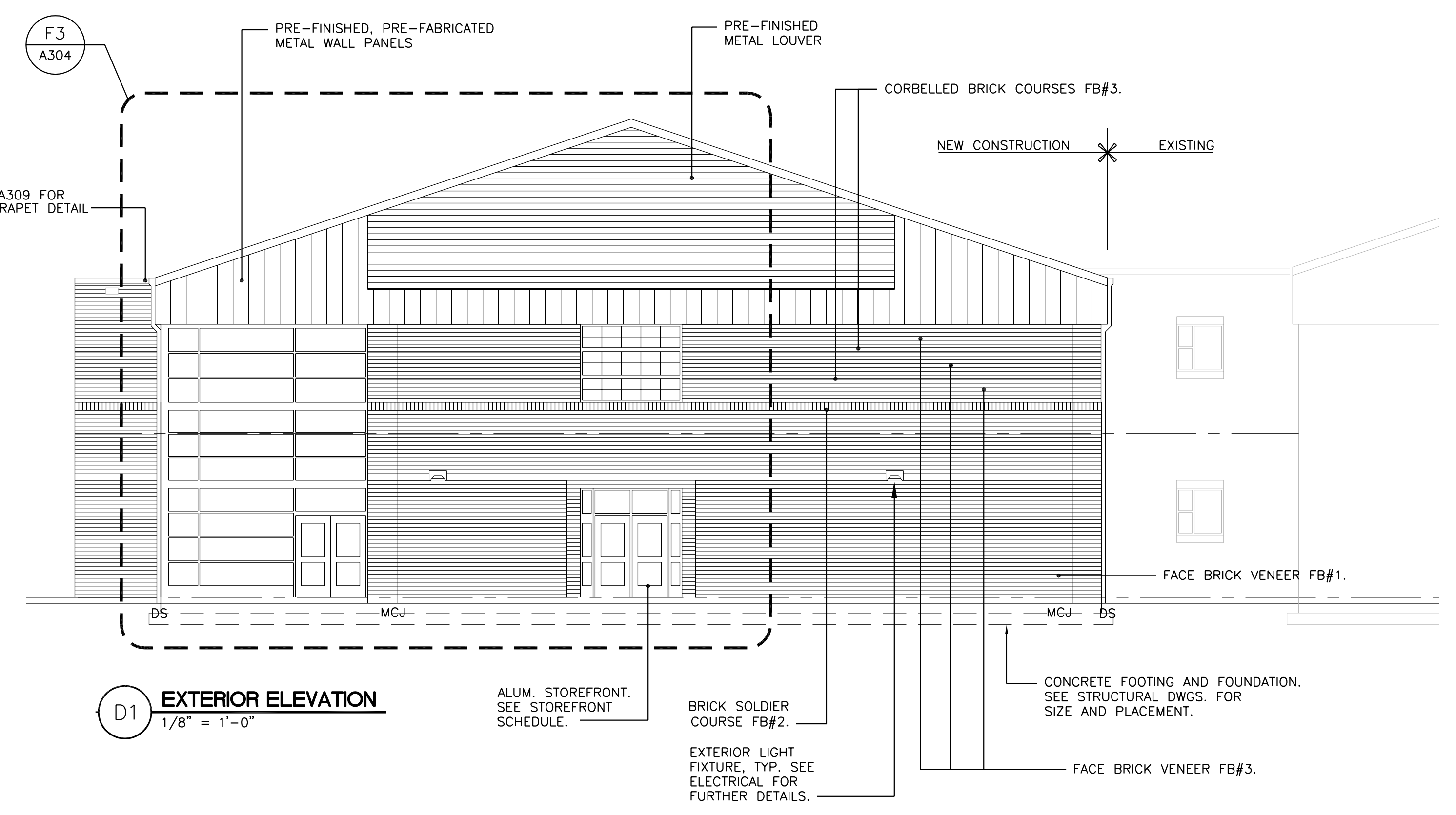
IREDELL-STATESVILLE SCHOOLS



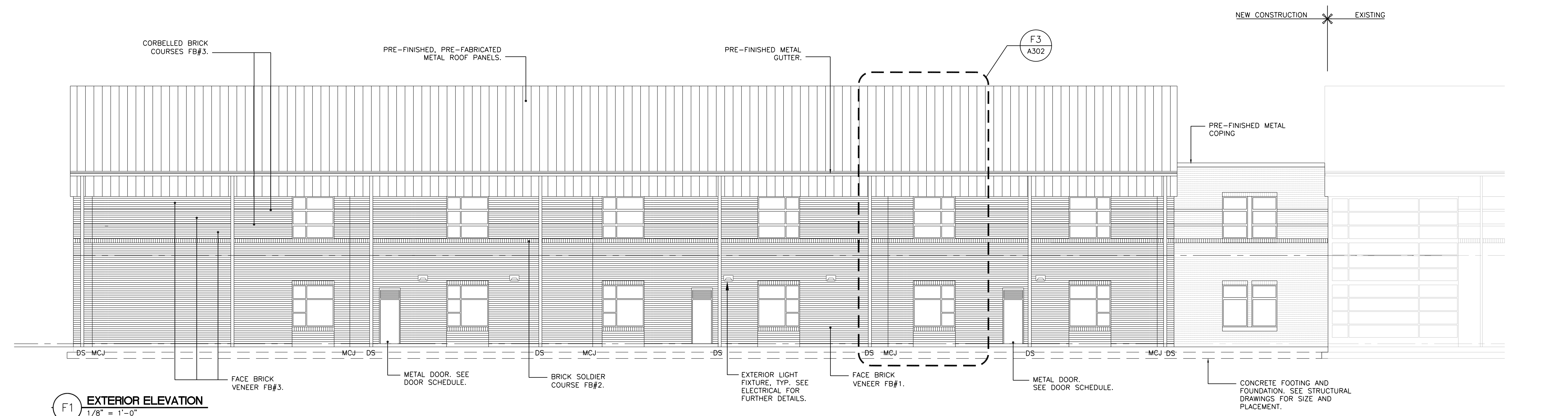
"WE OPEN TOMORROW'S EYES"



B1 EXTERIOR ELEVATION
1/8" = 1'-0"



D1 EXTERIOR ELEVATION
1/8" = 1'-0"



F1 EXTERIOR ELEVATION
1/8" = 1'-0"

NOTE:
MCJ = MASONRY CONTROL JOINTS ARE TO BE TYPICALLY 2'-0" FROM EVERY INTERNAL AND EXTERNAL CORNERS AND AT SPACINGS NOT TO EXCEED 30'-0". WHERE POSSIBLE MCJ ARE TO BE CENTERED BETWEEN OPENINGS IN THE WALL. NO MCJ ARE TO BE INSTALLED DIRECTLY BEHIND OR WITHIN 1'-0" OF ANY DOWNSPOUTS. LOCATIONS CAN MOVE SLIGHTLY TO FIT BRICK COURSING AS LONG AS OTHER LIMITATIONS ARE NOT EXCEEDED WHERE MCJ'S OCCUR IN A BRICK AND BLOCK WALL ALIGN MCJ'S IN BRICK VENEER WITH VERTICAL JOINT IN CMU WALL IN METAL STUD AND BRICK VENEER EXTERIOR WALL IF JOINT OCCURS WITHIN 2'-0" OF COLUMN LINE MOVE SO THAT MCJ OCCURS ON COLUMN CENTERLINE AS LONG AS OTHER LIMITATIONS ARE NOT EXCEEDED



CHARLOTTE
1300 BAXTER STREET
SUITE 300
CHARLOTTE, NC 28204
704/731-7000

SHELBY
POST OFFICE BOX 2285
215 E. WARREN STREET
SHELBY, NC 28151-2285
704/406-6000

RALEIGH
4020 WAKE FOREST ROAD
SUITE 301
RALEIGH, NC 27609
919/573-6400

BUILDING ELEVATIONS

SHEET TITLE	
0508	BID
PROJECT NUMBER	A208
11.29.05	RELEASE DATE
SHEET	OF